

60
or older

1 in 4 Ohioans, or about 3 million people, are aged 60 or older

Ohio House District 54 Legislative Fact Sheet



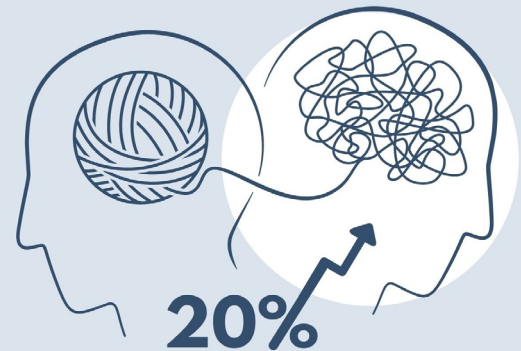
Representative Dick Stein

2023

| Age | Number | District % | State % |
|---------|--------|------------|---------|
| Under 5 | 5,302 | 4.4% | 5.9% |
| 5-17 | 17,948 | 14.8% | 16.5% |
| 18-34 | 24,823 | 20.5% | 22.1% |
| 35-64 | 48,556 | 40.0% | 38.5% |
| 65+ | 24,658 | 20.3% | 17.0% |

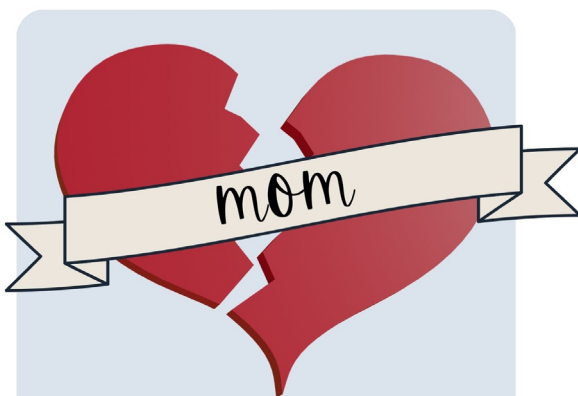
| Race | Number | District % | State % |
|---|---------|------------|---------|
| Black African American | 3,568 | 2.9% | 12.3% |
| American Indian Alaskan Native | 284 | 0.2% | 0.2% |
| Asian | 690 | 0.6% | 2.4% |
| Native Hawaiian Pacific Islander | - | - | 0.03% |
| White | 110,642 | 91.2% | 79.6% |
| Two or more races | 5,342 | 4.6% | 4.3% |
| Some other race | 761 | 0.7% | 1.2% |
| Black, Indigenous, People of Color, total | 14,062 | 11.6% | 22.2% |

| Ethnicity | Number | District % | State % |
|-------------------------------|--------|------------|---------|
| Hispanic Latino of any race | 6,105 | 5.0% | 4.1% |



Ohio adults who reported frequent poor mental health days increased by 20% since 2011

5,200+ Ohioans died of drug overdose in 2020



Ohio maternal mortality rates more than doubled between 2008 and 2018

| Education | Number | District % | State % |
|------------------------------------|--------|------------|---------|
| Less than a high school diploma | 7,018 | 8.2% | 8.9% |
| High school diploma or equivalent | 30,455 | 35.4% | 32.6% |
| Associate's degree or some college | 27,225 | 31.6% | 28.8% |
| Bachelor's degree or higher | 21,358 | 24.8% | 29.7% |

61% of those maternal deaths were preventable

Ohio House District 54 Legislative Fact Sheet



2023

Representative Dick Stein



45% of Ohioans aged 16-64 and living in poverty worked at least part-time for at least part of the year



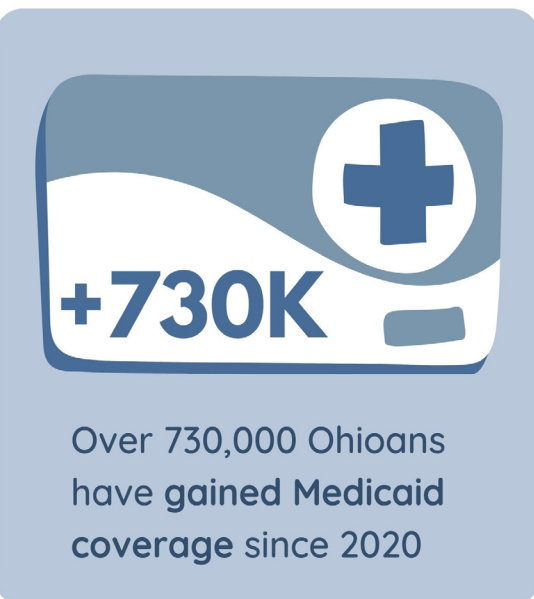
| Employment | Number | District % | State % |
|--|--------|------------|---------|
| Persons 16+ in the Labor Force | 57,626 | 61.9% | 62.6% |
| <small>Labor Force includes adults who are employed and those unemployed but actively looking for work</small> | | | |

| Poverty | Number | District % | State % |
|---|--------|------------|---------|
| Persons living in poverty | 9,982 | 8.8% | 13.4% |
| Persons in or near poverty | 25,877 | 22.8% | 29.9% |
| Persons in deep poverty | 4,285 | 3.8% | 6.1% |
| <small>In or near poverty: under 200% federal poverty threshold Deep poverty: 50% federal poverty threshold</small> | | | |

| Housing affordability | Number | District % | State % |
|--|--------|------------|---------|
| Owner occupied households in unaffordable housing | 6,842 | 19.0% | 17.2% |
| Renter occupied households in unaffordable housing | 3,474 | 37.4% | 43.8% |
| <small>Housing is considered unaffordable if housing costs are more than 30% of the household income</small> | | | |



Older adults are more likely than younger people to struggle with housing affordability



| Benefits Access | Number | District % | State % |
|--|--------|------------|---------|
| Medicaid health coverage | 12,219 | 10.5% | 17.7% |
| No health insurance | 5,839 | 5.0% | 6.3% |
| Households receiving social security (OASDI) | 17,535 | 37.8% | 31.7% |
| Households receiving SNAP | 3,095 | 6.7% | 13.0% |



More than 75% of Ohio SNAP households had at least one person working at least part-time in 2021

